



weathertex

timber made perfect, naturally

Cladding | Panels | Weatherboard



Product Portfolio





EcoWall Smooth



Weathergroove 150 Woodsmen

The right choice

When you purchase Weathertex you are buying from an ethically sound company that supports local jobs and our environment, all the while creating a brilliant product we believe in. Now that's something to get behind... naturally.

Weathertex is a manufacturer of natural Australian hardwood Weatherboards and Architectural Panels. Our products are made in NSW, at the original 1939 factory using a unique process found nowhere else in the world.

Most Trusted Brand

Weathertex is proud to announce being voted Australia's Number 1 Most Trusted Brand in 2016, in the Architecture and Design annual 'Top Trusted Brand' survey. With over 341 nominated brands and over 13,000 votes, this survey reveals Australia's top brands within the architecture, building, construction and design industries. Weathertex also won Number 1 Most Trusted Brand Winner in the 'External Wall Materials' category.

Our 'Green' Accreditations

100% Australian owned and manufactured, Weathertex uses certified state forest or private hardwoods from controlled sources. Proud and determined to promote environmental and sustainable performance measures, we have worked hard to ensure our products are third party accredited. Weathertex has been through a rigorous life-cycle evaluation from Global GreenTag to determine our "green performance" and we are proud to announce we have the FIRST GLOBAL manufactured product to receive a Platinum certification with a GreenRate Level A for our Natural products, and Gold Certification for all our flat primed profiles.

Weathertex has been recently added to the International Living Future Institute Declare Label database. Declare is a voluntary program aiming to transform the building materials industry towards healthier products. The labelling answers three important questions - Where does a product come from? What is it made of? Where does it go at the end of its life?

Global GreenTag International have designed a Product Health Declaration (PhD) to assess chemical hazards of each ingredient throughout the product lifecycle, and the risk associated with exposure and handling. We have been assessed using this system in an attempt to be even more transparent with our customers in regards to the safety of our products.

Have you heard of the Programme for the Endorsement of Forest Certification, or PEFC? The Programme is an international non profit, non-governmental organization dedicated to promoting Sustainable Forest Management through independent third-party certification. With over 30 endorsed national certification systems and more than 240 million hectares of certified forests, PEFC is the world's largest forest certification system. PEFC works through the entire forest supply chain promoting good forest practices and ensuring products are produced following the highest ecological, social and ethical standards.

For more information on our environmental standards and certifications, visit <http://www.weathertex.com.au/about-us/certifications-partners/>



The right benefits

- **Australian made and owned** - proudly made in the Hunter, NSW.
- **Third Party Sustainable Credentials** - With a better than zero carbon footprint - GreenTag certification, PhD and Declare labeling.
- **Warranty** - Guaranteed not to rot, split or crack for up to 25 years.
- **Low maintenance** - on average, repainting on primed range is required every 15 years.
- **Value for money** - lightweight product, simple installation. Single person install for the Primelok range.
- **Easy to install** - only standard carpenter's tools are required.
- **Longevity** - natural Australian timber, made to last.
- **Termite Resistant** - Sugars and starches are removed.
- **Safe** - can be sawn or cut indoors.
- **Quicker to install** - all profiles* can be direct fixed to frame.
- **Reliable** - Voted Number 1 'Most Trusted Brand' of Architecture and Design 2016, and category winner in 'External Wall Materials.'



**THE FIRST MANUFACTURED PRODUCT
GLOBALLY TO ACHIEVE PLATINUM
GREENTAG™ CERTIFICATION**

*excluding Rubix



Selflok Ecogroove 150 Natural



Weathergroove 150 Natural

Natural Cladding

The Natural range is an unprimed board which provides a unique appearance, with the characteristics and looks of raw, undressed timber. The Natural surface is pressed to create a woodgrain effect. Its rough, deep cut pattern shows all the knots, grains and imperfections of natural timber.

It can be left to weather naturally or be stained.

When the Natural surface is treated, the look of fresh brown timber is maintained. When allowed to weather naturally, the depth of colour will vary, subject to location and sun exposure.

Weathertex's natural finished products are covered by a 10 year warranty not to rot, split or crack. Please see the warranty section of the Weathertex website for full details.

Weathertex can be used internally and as an external wall cladding in bushfire attack levels up to and including BAL 19 construction.

FREE online samples now available



Selflok VGroove 150 Natural

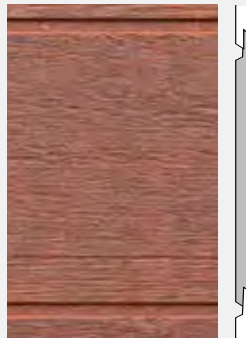
NATURAL



Download the installation manual



SELFLOK
ECOGROOVE 150[^]
NATURAL
Width: 300mm



SELFLOK
ECOGROOVE 300[^]
NATURAL
Width: 300mm



SELFLOK
VGROOVE 150[^]
NATURAL
Width: 300mm



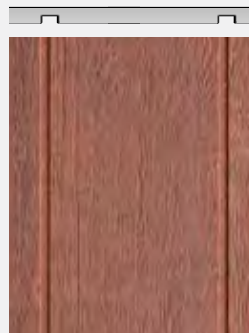
SELFLOK
VGROOVE 300[^]
NATURAL
Width: 300mm



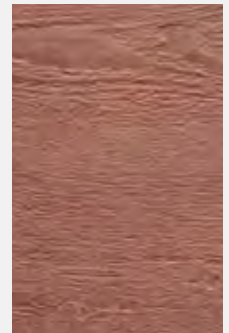
WALL SHINGLES
Length: 1195mm
Width: 225mm



WEATHERGROOVE
150 NATURAL
3660 X 1196mm



WEATHERGROOVE 300
NATURAL
3660 x 1196mm



ECOWALL NATURAL
3660 x 1220mm

* Refer to the Weathertex Manufacturer's Warranty Conditions

*All Weatherboards are 3660 mm in length and 9.5 mm in thickness. ^ Refers to groove spacing.

Colour of product will differ to photos which have been lightened for printing.

Natural *Styles*

RETAIN ORIGINAL COLOUR



Weathertex Natural begins as a dark hardwood colour. Left uncoated it will lighten. To retain the original colour the boards should be stained. Cabots Aquadeck New Natural or Intergrain Enviropro Cedar Cyprus will closest match the original colour.

If you choose to lighten the boards but want to restore them to their original colour, you can do so at any time. Clean the boards with Cabots deck clean or similar, and a sturdy deck clean brush before staining.

UNSEALED (Naturally Lighten)

Left to weather naturally by the sun, the timber will lighten and 'silver off' after a period of time. This can produce some beautiful results that become a unique feature of the construction. For best results use this technique on buildings that are exposed to full sun and aren't obscured by fences, trees or awnings. Weathertex is made with Australian hardwood timber and colours may slightly vary season to season.

To stop the silvering off process the boards can be stained at any time which will protect the boards from the sun, as well as allow for a range of colours and depth. Boards can be brought back to their original dark colour by first scrubbing with a deck cleaner and then applying the appropriate coloured stain.

COLOUR STAIN & SEALED

Weathertex Natural range can be stained and sealed in the same manner as other hardwood timbers. Wash the boards down first with Cabots deck cleaner, Intergrain Revive or a similar product. Make sure the boards are clean and dry before staining. When staining follow the direction of the cladding to ensure each board has an even coating.

Coat the boards with a soft brush first before cutting in the edges. Add another coat, then cut in again. A third coat is optional, and there is no need to cut in the edges again on the third coat. Keep a wet edge throughout to make sure visible layers aren't seen on the finished product. Stopping and starting during coating may lead to an uneven finish as the stain will dry in uneven layers.

We don't recommend a clear coats or varnish, instead we recommend Cabots Aquadeck, Intergrain Natural Stain or Intergrain Enviropro Deck Stain on the Weathertex Natural range. Please make sure to follow all product instructions when staining as they may vary.



0 MONTHS: Recently built, this shows the beginning colour of Weathertex Natural boards.



4 MONTHS: The board shows signs of lightening.



7 MONTHS: The board is continuing to lighten.



17 MONTHS: The boards are now a light blonde colour.



36 MONTHS: The boards are now very light, and are about to begin to be restored.



CLEANING: Wash the boards with a product like Intergrain Reviver or Cabots Deck Clean and a firm brush.



STAINING: Stain in the same direction that the boards run - vertical for vertical cladding.



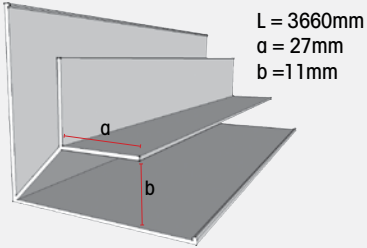
COMPLETE: After 3 coats the timber is restored and is now UV protected.

Note: This project is only an example of the lightening and restoring process. Different projects will lighten at different speeds depending on location and exposure to sunlight.

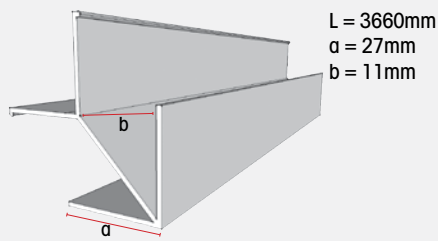
Natural Accessories

Trimtec accessories *made from anodised aluminium

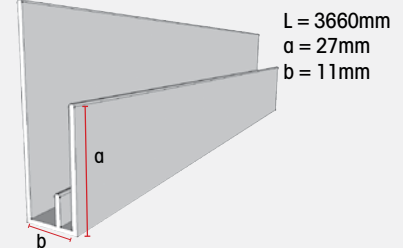
SMALL INTERNAL LF ALUMINIUM CORNER



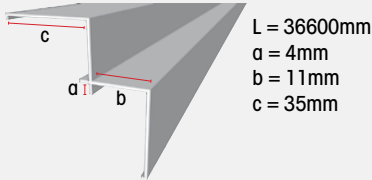
SMALL EXTERNAL LF ALUMINIUM CORNER



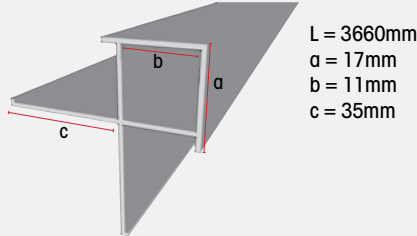
SMALL END STOP/ WINDOW SURROUND



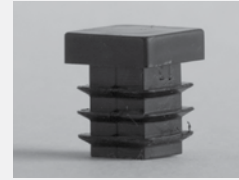
SMALL INTERNAL ALUMINIUM CORNER



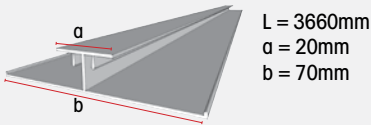
SMALL EXTERNAL ALUMINIUM CORNER



SMALL CORNER PLUG



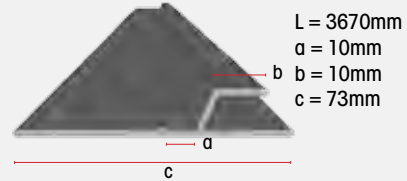
LONG VERTICAL ALUMINIUM JOINER



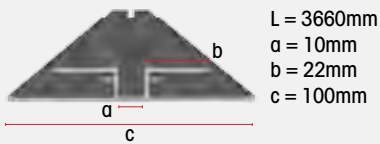
ALUMINIUM Z FLASHING



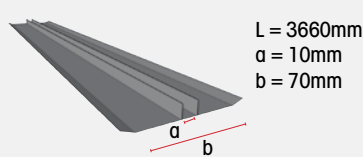
SMALL ALUMINIUM Z FLASHING



DEEP CHANNEL JOINER LF



ALUMINIUM DEEP CHANNEL JOINER



Cavity wall system (optional)

CAVITY CLOSER



L = 1830mm
a = Large 20mm
Small 10mm

CAVITY BATTENS



1220mm x 45mm
For all cavity constructions



Selflok Ecogroove 150 Natural



Weathergroove 150 Natural



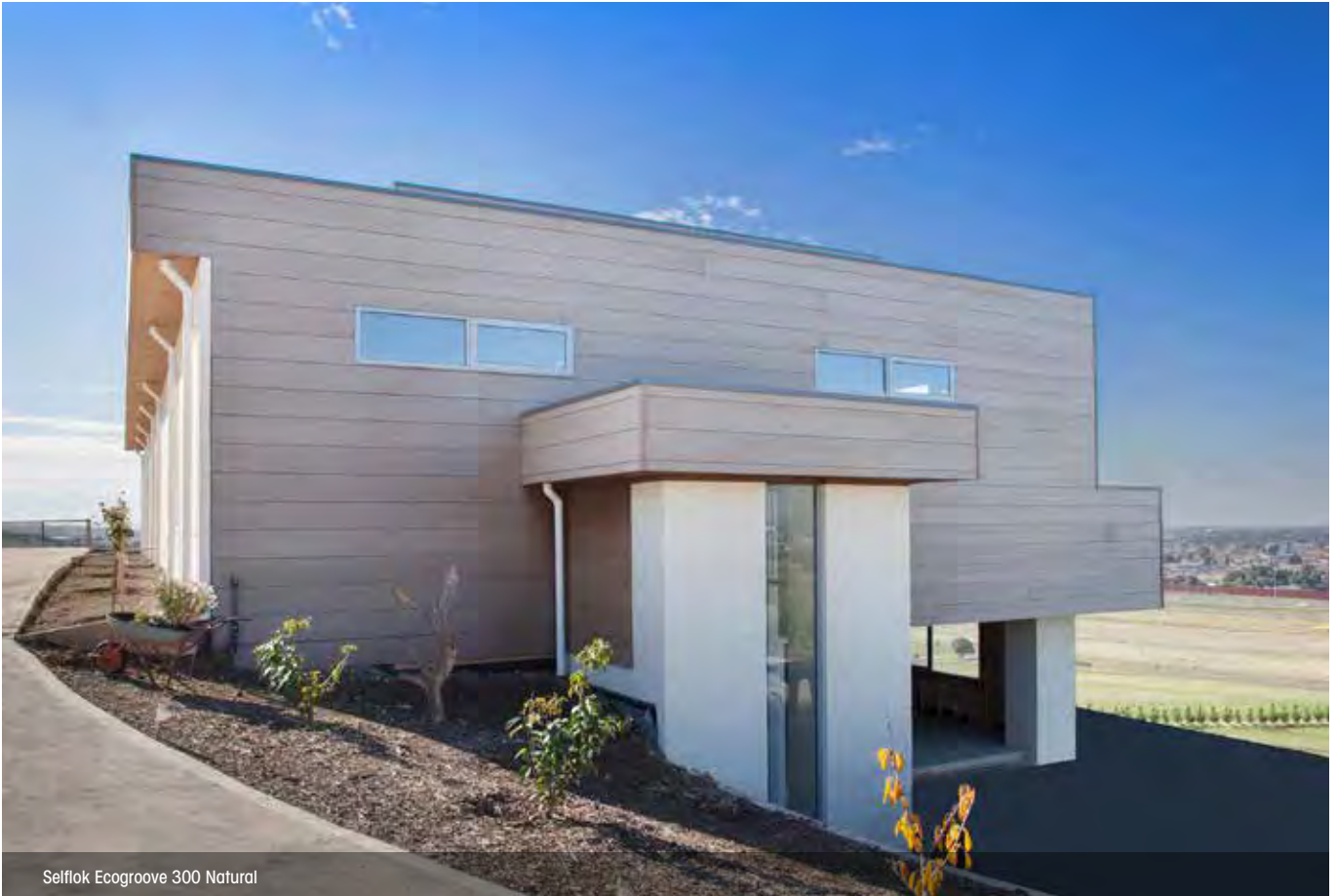
Weathergroove 150 Natural



Selflok Ecogroove 150 Natural (photo taken 12 months after install)



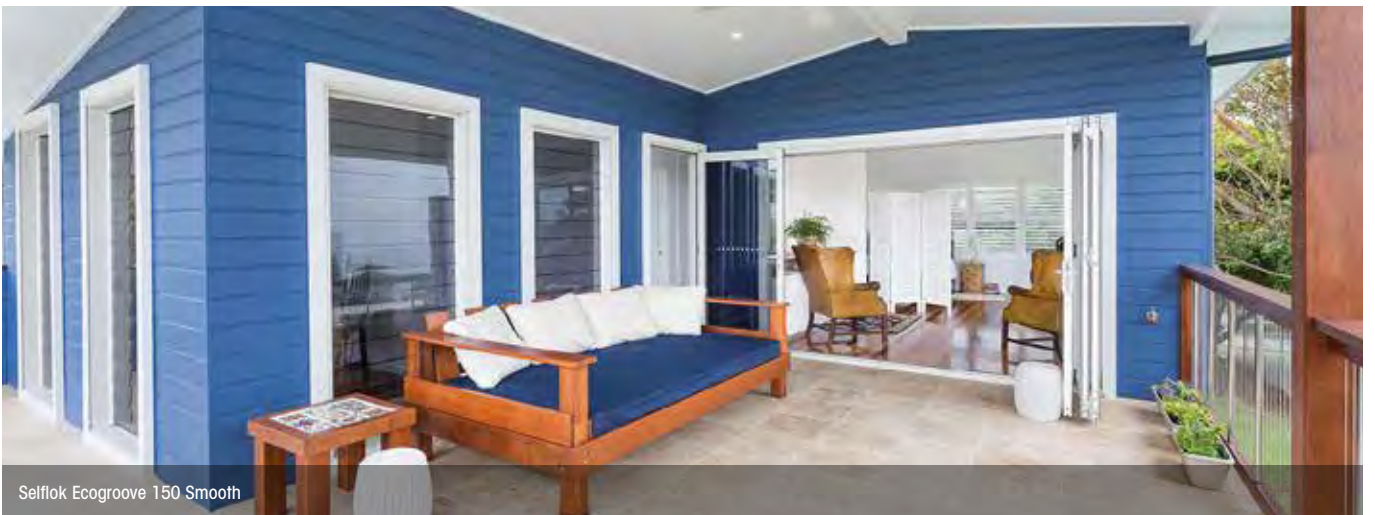
Weathergroove 150 Natural (aged)



Selflok Ecogroove 300 Natural



Selflok Ecogroove 150 Smooth



Selflok Ecogroove 150 Smooth

Selflok Weatherboards

A favourite in the Weathertex family, Selflok Weatherboards have the simplest self-locking system, which allows every board to self gauge. The precise routing gives the product that beautiful and unique ship lapped profile that makes it the first choice for many.

In the Selflok range are the increasingly popular Selflok Ecogroove Weatherboards. The Selflok Ecogroove Smooth is the ideal choice for a smooth-to-touch finish, whereas the Selflok Ecogroove Woodsman provides the distinct wood grain texture of natural timber. Both are available in varying sizes.

Advantages

- The unique lapping system allows a quick and easy installation.
- It is a durable and lightweight product.
- Requires only standard DIY cutting tools.
- All profiles can be direct fixed to frame.
- Cavity systems can be used as an additional option.

Weathertex can be used internally and as an external wall cladding in bushfire attack levels up to and including BAL 19 construction.

FREE online samples now available



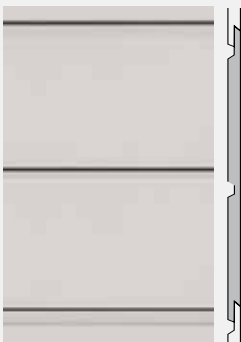
Selflok Ecogroove 150 Smooth



Download the installation manual



* Refer to the Weathertex Manufacturer's Warranty Conditions



SELFLOK
ECOGROOVE 150[^]
SMOOTH
Width: 300mm



SELFLOK
ECOGROOVE 150[^]
WOODSMAN
Width: 300mm



SELFLOK
ECOGROOVE 300[^]
SMOOTH
Width: 300mm



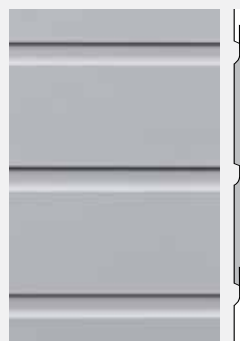
SELFLOK
ECOGROOVE 300[^]
WOODSMAN
Width: 300mm



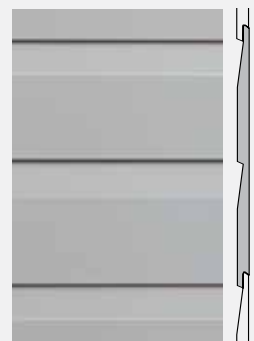
SELFLOK MILLWOOD
SMOOTH
Width: 300mm



SELFLOK MILLWOOD
RUFF-SAWN
Width: 300mm



SELFLOK TEXWOOD
SMOOTH
Width: 300mm



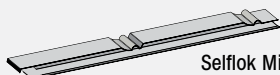
SELFLOK OLD COLONIAL
SMOOTH
Width: 300mm

*All Weatherboards are 3660 mm in length and 9.5 mm in thickness. ^ Refers to groove spacing.

Selflok Accessories

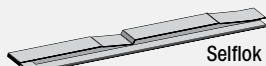
Weathertex accessories

MILLWOOD JOINERS



Selflok Millwood 300mm weatherboards

OLD COLONIAL JOINERS



Selflok Old Colonial Smooth

ECOGROOVE 150 JOINERS



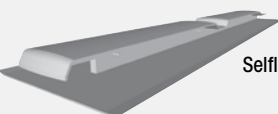
Selflok Ecogroove 150 Smooth, or Woodsman.

ECOGROOVE 300 JOINERS



Selflok Ecogroove 300 Smooth, or Woodsman.

TEXWOOD JOINERS



Selflok Texwood Smooth

300MM CONCEALED JOINERS

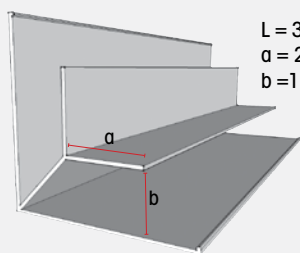


For all Selflok 300mm Weatherboards

Note: All joiners are installed off stud.

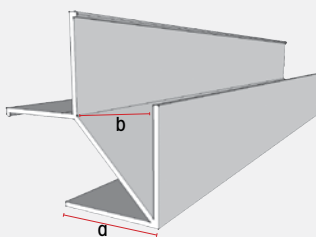
Trimtec accessories *made from anodised aluminium

SMALL INTERNAL LF ALUMINIUM CORNER



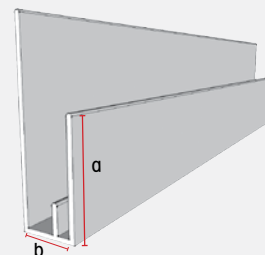
L = 3660mm
a = 27mm
b = 11mm

SMALL EXTERNAL LF ALUMINIUM CORNER



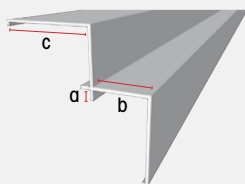
L = 3660mm
a = 27mm
b = 11mm

SMALL END STOP/ WINDOW SURROUND



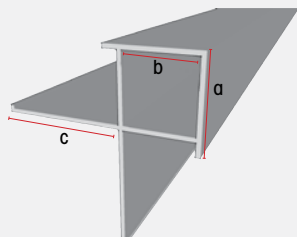
L = 3660mm
a = 27mm
b = 11mm

SMALL INTERNAL ALUMINIUM CORNER



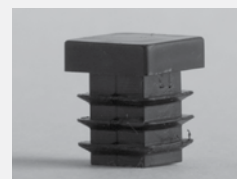
L = 3660mm
a = 4mm
b = 11mm
c = 35mm

SMALL EXTERNAL ALUMINIUM CORNER

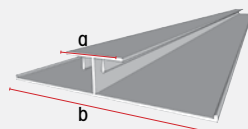


L = 3660mm
a = 17mm
b = 11mm
c = 35mm

SMALL CORNER PLUG

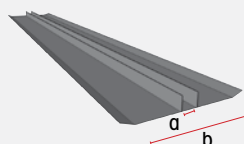


LONG VERTICAL ALUMINIUM JOINER



L = 3660mm
a = 20mm
b = 70mm

ALUMINIUM DEEP CHANNEL JOINER



L = 3660mm
a = 10mm
b = 70mm

Cavity wall system (optional)

SMALL CAVITY CLOSER

L = 1830mm
a = 10mm



CAVITY BATTENS



1220mm x 45mm
For all cavity constructions



Selflok Millwood Ruff-Sawn



Selflok Millwood Smooth



Selflok Ecogroove 300 Smooth, EcoWall Smooth



Selflok Millwood Smooth



Selflok Ecogroove 150 Smooth



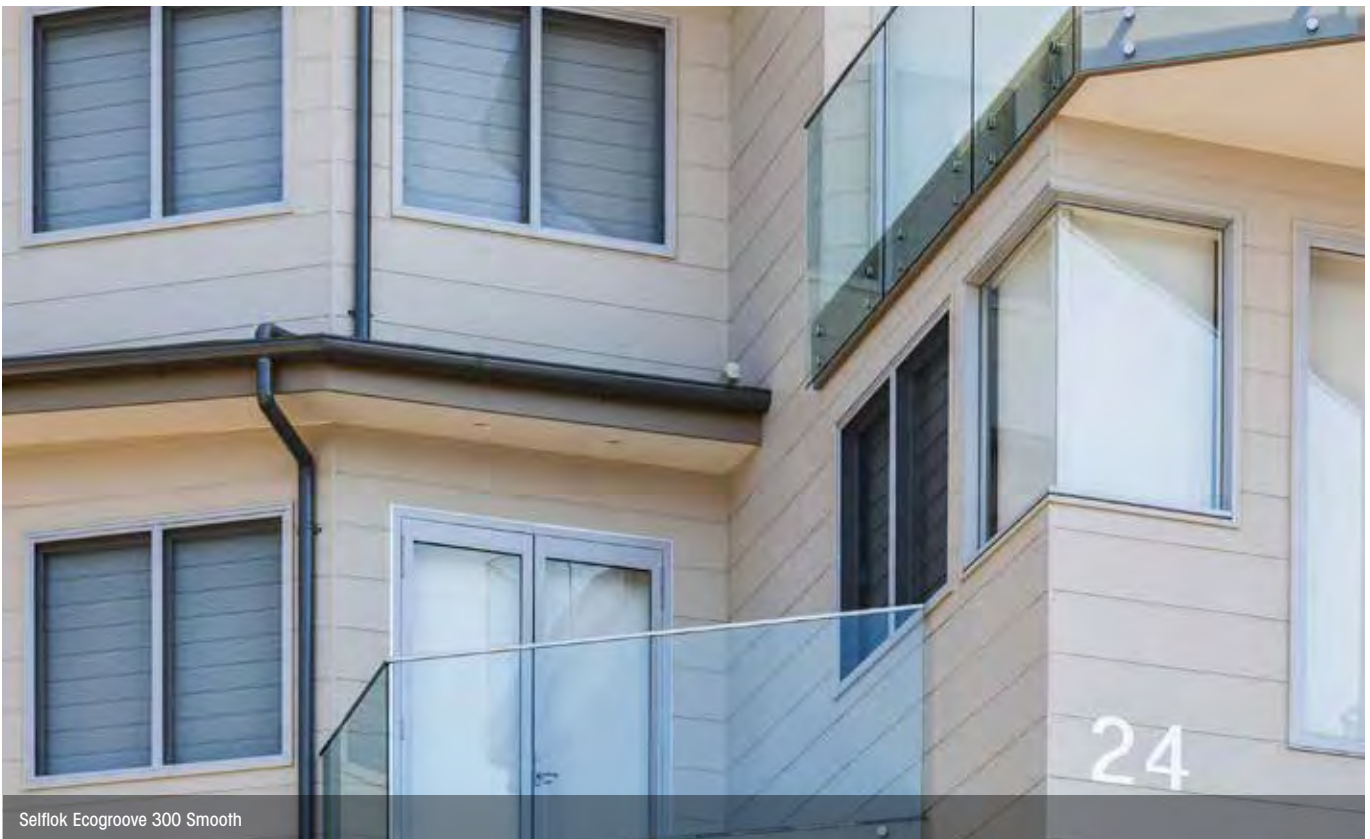
Selflok Ecogroove 150 Smooth



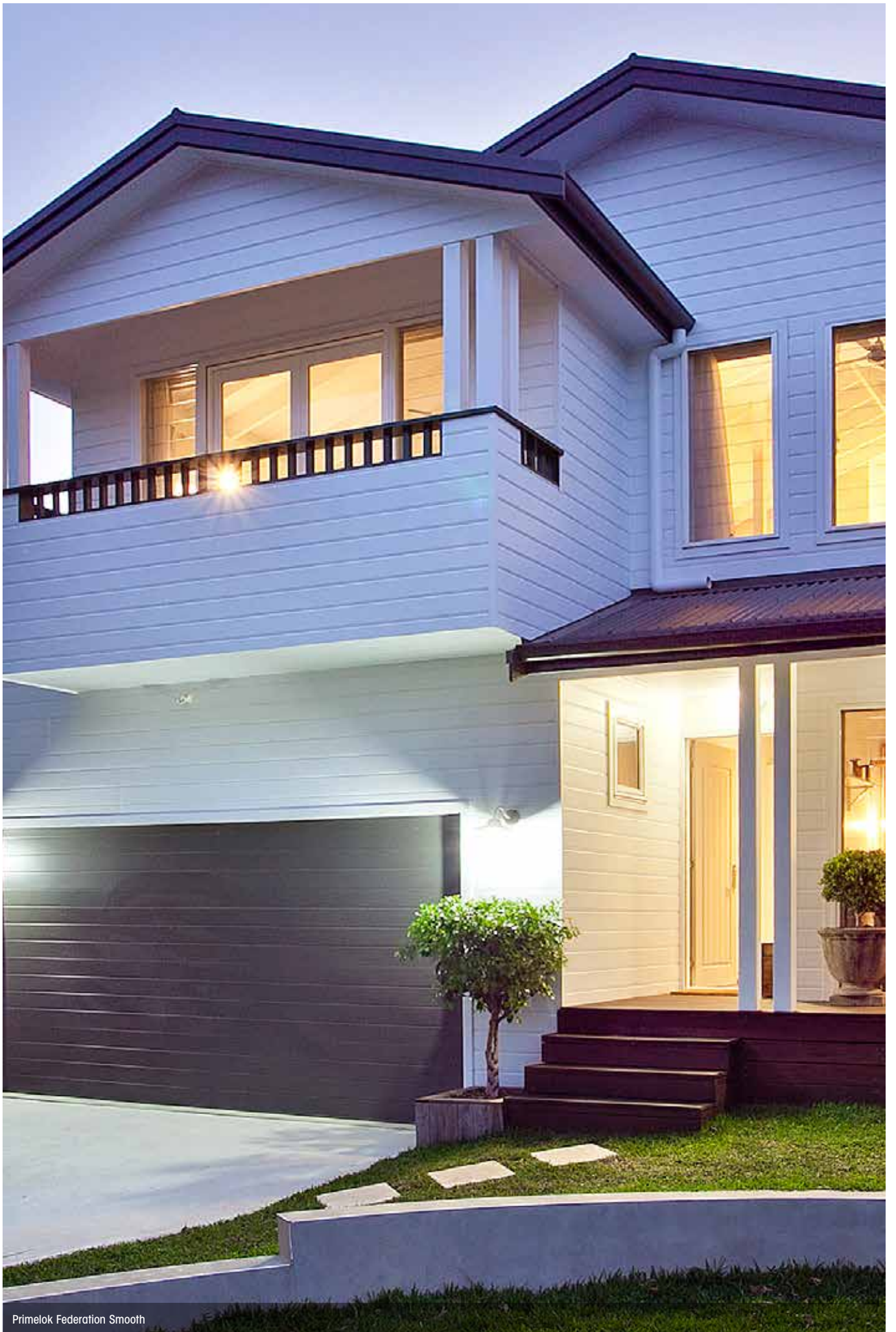
Selflok Ecogroove 300 Smooth



Selflok Ecogroove 150 Smooth



Selflok Ecogroove 300 Smooth



Primelok Federation Smooth

Primelok Weatherboards

Our exclusive Weathertex Primelok fixing system ensures a perfect and easy alignment of the boards, reducing installation time. The overlapping of each board conceals fixings, resulting in smooth, clean, straight lines.

Primelok Weatherboards are suitable for gun nailing installation, and pre-primed as a standard feature.

Weathertex can be used internally and as an external wall cladding in bushfire attack levels up to and including BAL 19 construction.



Primelok Shadowwood Smooth

FREE online samples now available



Download the installation manual



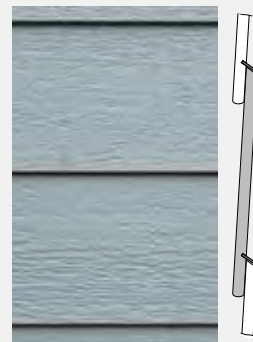
* Refer to the Weathertex Manufacturer's Warranty Conditions



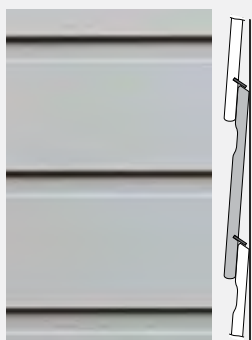
PRIMELOK
SMOOTH
Width: 200mm



PRIMELOK
RUFF-SAWN
Width: 200mm



PRIMELOK
WOODSMAN
Width: 200mm



PRIMELOK FEDERATION
SMOOTH
Width: 170mm



PRIMELOK FEDERATION
RUFF-SAWN
Width: 170mm



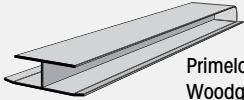
PRIMELOK
SHADOWWOOD SMOOTH
Width: 170mm

*All Weatherboards are 3660 mm in length and 9.5 mm in thickness.

Primelok Accessories

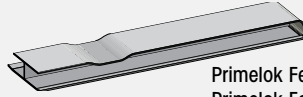
Weathertex accessories

TRADITIONAL OFF STUD JOINER



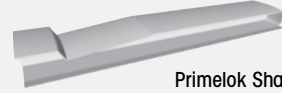
Primelok 200 smooth, or Woodgrain joiner for Primelok Ruff-Sawn, Primelok Woodsman

FEDERATION JOINERS



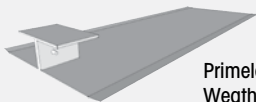
Primelok Federation Smooth, Primelok Federation Ruff-Sawn

SHADOWOOD JOINERS



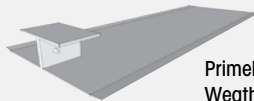
Primelok Shadowood Smooth

170MM CONCEALED JOINER



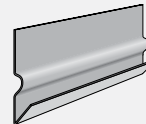
Primelok 170 Weatherboards

200MM CONCEALED JOINER



Primelok 200mm Weatherboards

PRIMELOK STARTER STRIP

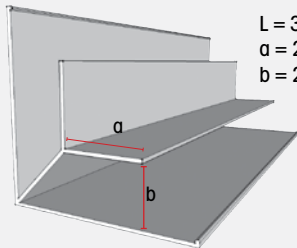


For ALL Primelok Weatherboards
L = 1830mm

Trimtec accessories

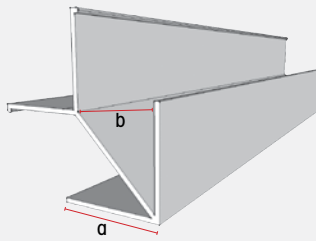
*made from anodised aluminium

LARGE INTERNAL LF ALUMINIUM CORNER



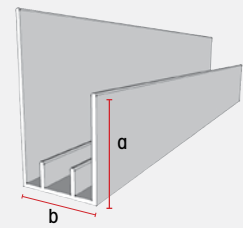
L = 3000mm
a = 27mm
b = 21mm

LARGE EXTERNAL LF ALUMINIUM CORNER



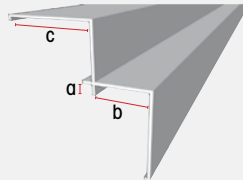
L = 3000mm
a = 27mm
b = 21mm

LARGE END STOP/ WINDOW SURROUND



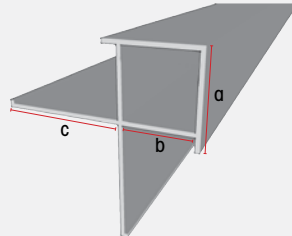
L = 3660mm
a = 27mm
b = 21mm

LARGE INTERNAL ALUMINIUM CORNER



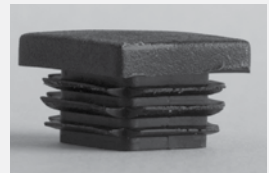
L = 3000mm
a = 21mm
b = 35mm

LARGE EXTERNAL ALUMINIUM CORNER



L = 3000mm
a = 27mm
b = 21mm
c = 35mm

LARGE CORNER PLUG



Primelok 200 Smooth with traditional joiners

Cavity wall system (optional)

LARGE CAVITY CLOSER

L = 1830mm
a = 20mm



CAVITY BATTENS



1220mm x 45mm
For all cavity constructions



Primelok Shadowood Smooth



Primelok 200 Smooth



Primelok Shadowood Smooth



Primelok Federation Smooth



Primelok 200 Smooth



Primelok Federation Smooth



Primelok Shadowood Smooth



Primelok Shadowood Smooth



Classic Smooth 200



Classic 200 Smooth

Classic Weatherboards

Weathertex Classic Weatherboards are truly an Australian classic. Choose Smooth or Ruff-Sawn surface finishes to create a clean, smart-looking home.

Weathertex Weatherboards are designed to blend beautifully with alternate building materials such as brick, render, stone and, of course, Weathertex Architectural Panels, providing limitless design and decorative solutions and applications.

Weathertex will complete your home with a high quality, highly durable and low maintenance product.

Weathertex can be used internally and as an external wall cladding in bushfire attack levels up to and including BAL 19 construction.

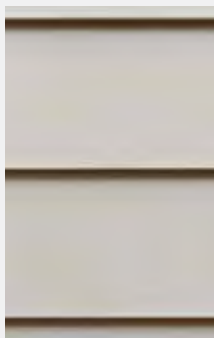


Classic 200 Smooth

FREE online samples now available

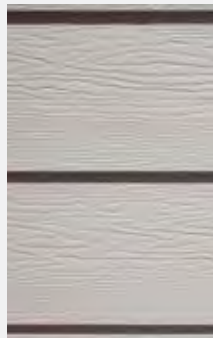


Download the installation manual



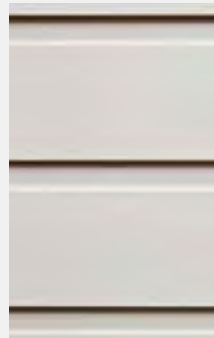
CLASSIC SMOOTH

Width: 200 or 300 mm



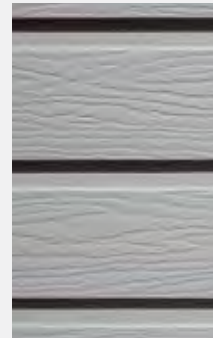
CLASSIC RUFF-SAWN

Width: 200 or 300 mm



CLASSIC RUSTICATED SMOOTH

Width: 200mm



CLASSIC RUSTICATED RUFF-SAWN

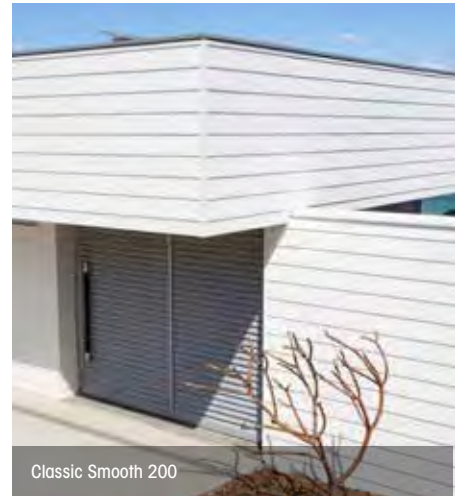
Width: 200mm



* Refer to the Weathertex Manufacturer's Warranty Conditions

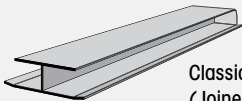
*All Weatherboards are 3660 mm in length and 9.5 mm in thickness.

Classic Accessories



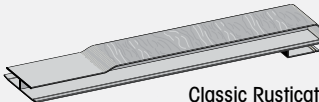
Weathertex accessories *made from PVC

TRADITIONAL OFF STUD JOINER



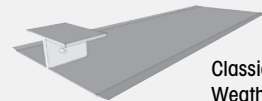
Classic 200 Smooth or Ruff-Sawn (Joiners in smooth or woodgrain), or Classic 300 (smooth)

RUSTICATED JOINERS



Classic Rusticated 200 Smooth or Ruff Sawn

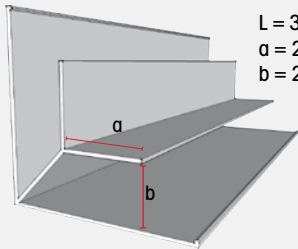
200MM CONCEALED JOINER



Classic 200mm Weatherboards.

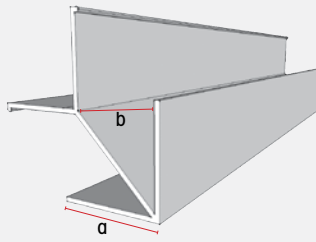
Trimtec accessories *made from anodised aluminium

LARGE INTERNAL LF ALUMINIUM CORNER



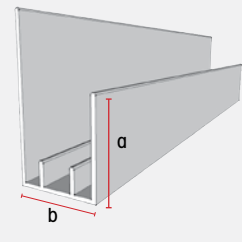
L = 3000mm
a = 27mm
b = 21mm

LARGE EXTERNAL LF ALUMINIUM CORNER



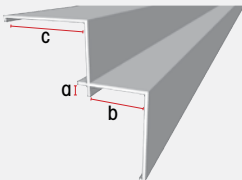
L = 3000mm
a = 27mm
b = 21mm

LARGE END STOP/ WINDOW SURROUND



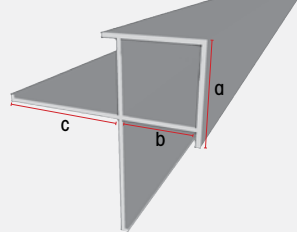
L = 3660mm
a = 27mm
b = 21mm

LARGE INTERNAL ALUMINIUM CORNER



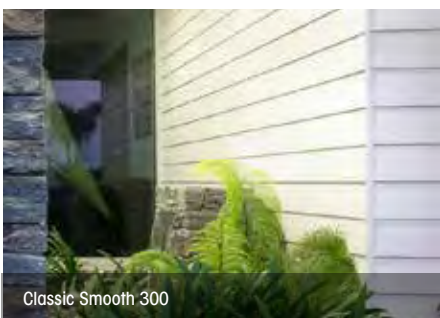
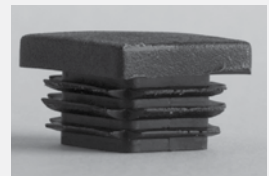
L = 3000mm
a = 21mm
b = 35mm

LARGE EXTERNAL ALUMINIUM CORNER



L = 3000mm
a = 27mm
b = 21mm
c = 35mm

LARGE CORNER PLUG



Cavity wall system (optional)

LARGE CAVITY CLOSER

L = 1830mm
a = 20mm



CAVITY BATTENS

1220mm x 45mm
For all cavity constructions



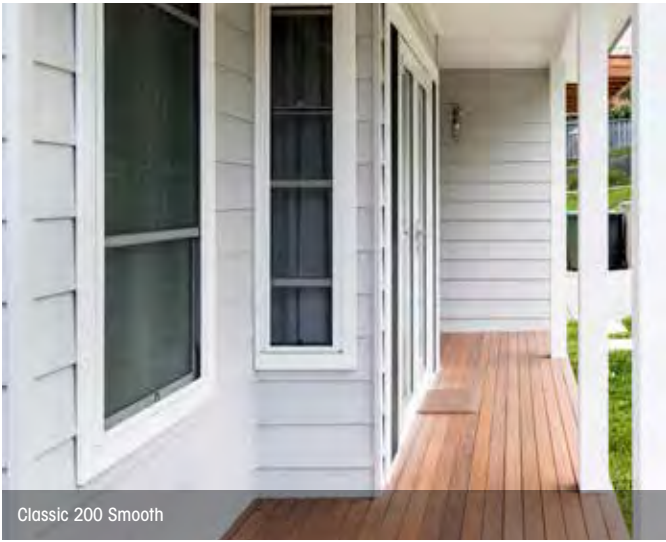


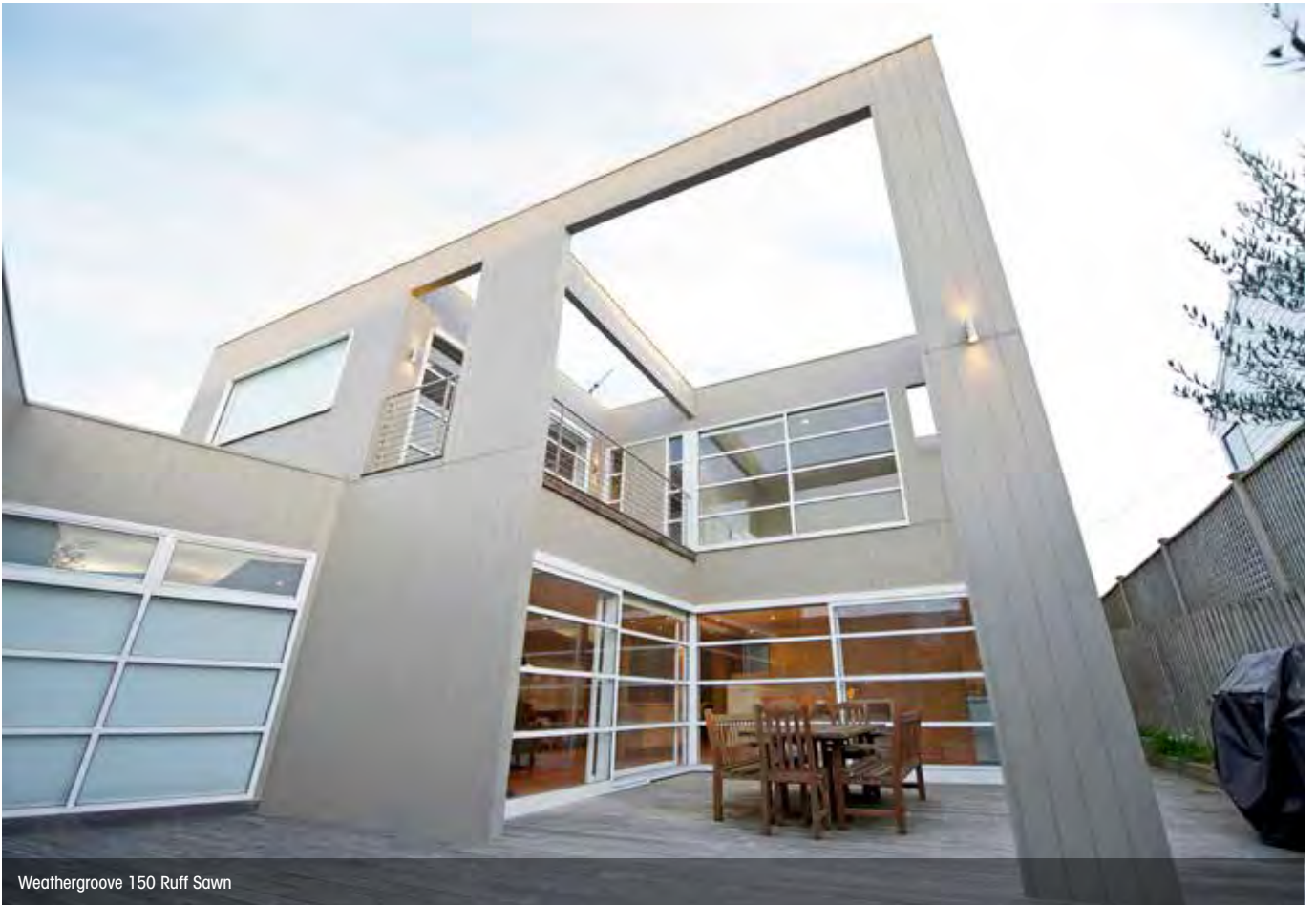


Classic Smooth 200



Classic Rusticated Smooth





Weathergroove 150 Ruff Sawn



Weathergroove 300 Smooth

Weathergroove Panels

Weathergroove is the largest panel available in the Australian market. This vertically grooved panel is ideal for covering large areas in a short time and it's versatility offers endless possibilities.

For improved performance, an exclusive joining system has been designed to clip onto the rebated edges of each panel, blending in perfectly with each Weathergroove sheet for a continuous panel finish. Weathergroove also provides a safe and reliable means of structural bracing. Please see the Weathertex Installation Manual for details.

Advantages

- Off-stud joining system
- Quick installation
- No silicone or adhesives required for installation

Weathertex can be used internally and as an external wall cladding in bushfire attack levels up to and including BAL 19 construction..

FREE online samples now available



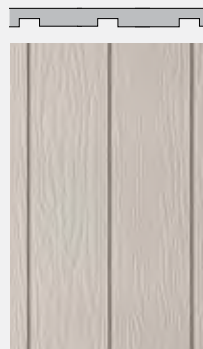
Weathergroove 150 Smooth



Download the installation guide



WEATHERGROOVE
150 SMOOTH



WEATHERGROOVE
150 RUFF-SAWN

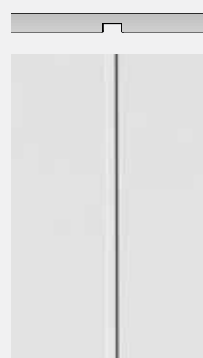


WEATHERGROOVE
150 WOODSMAN



WEATHERGROOVE
300 SMOOTH*

WEATHERGROOVE SIZES
3660 x 1196mm 2440 x 1196mm 2745 x 1196mm
Thickness: 9.5mm



WEATHERGROOVE
600 SMOOTH*



WEATHERGROOVE
1200 SMOOTH*

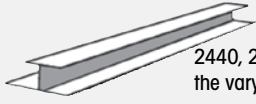
* Refer to the Weathertex Manufacturer's Warranty Conditions

* Only available in 3660mm x 1196mm and 2745mm x 1196mm

Weathergroove Accessories

Weatherterx accessories

WEATHERGROOVE JOINERS



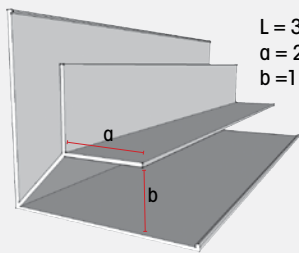
2440, 2745, 3660mm to fit the varying panel sizes.



Weathergroove 150 Smooth and Trimtec Accessories

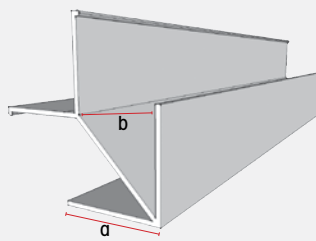
Trimtec accessories *made from anodised aluminium

SMALL INTERNAL LF ALUMINIUM CORNER



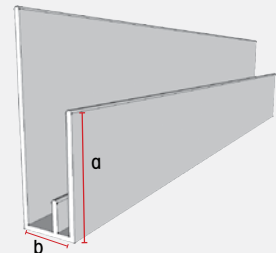
L = 3660mm
a = 27mm
b = 11mm

SMALL EXTERNAL LF ALUMINIUM CORNER



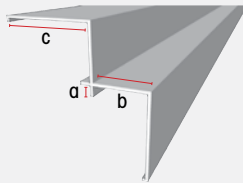
L = 3660mm
a = 27mm
b = 11mm

SMALL END STOP/ WINDOW SURROUND



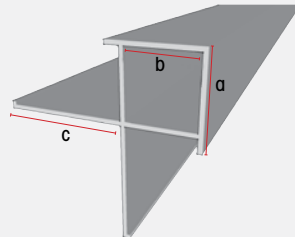
L = 3660mm
a = 27mm
b = 11mm

SMALL INTERNAL ALUMINIUM CORNER



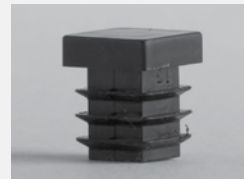
L = 3660mm
a = 4mm
b = 11mm
c = 35mm

SMALL EXTERNAL ALUMINIUM CORNER

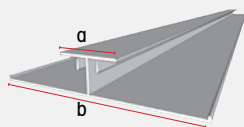


L = 3660mm
a = 17mm
b = 11mm
c = 35mm

SMALL CORNER PLUG



LONG VERTICAL ALUMINIUM JOINER



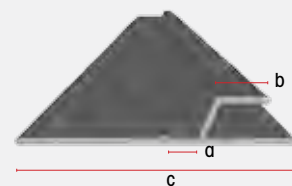
L = 3660mm
a = 20mm
b = 70mm

ALUMINIUM Z FLASHING



L = 3660mm
a = 27mm
b = 11mm

SMALL ALUMINIUM Z FLASHING



L = 3670mm
a = 10mm
b = 10mm
c = 73mm



Weathergroove 600 Smooth

Cavity wall system (optional)

SMALL CAVITY CLOSER



L = 1830mm
a = 10mm

CAVITY BATTENS



1220mm x 45mm
For all cavity constructions



Weathergroove 150 Ruff-Sawn





Weathergroove 1200 Smooth, Weathergroove 150 Smooth, Selflok Ecogroove 150 Natural



Weathergroove 150 Smooth



Weathergroove 150 Smooth



Weathergroove 150 Smooth and EcoWall Smooth



Weathergroove 150 Woodsman



EcoWall Smooth



EcoWall Smooth

EcoWall Panels

EcoWall is one of the most durable, high impact and versatile types of panel available. The possibility of both vertical and horizontal express jointing lends flexibility to the pattern of your choice. Whether a modern architecturally designed home or a large commercial project, the decorative applications are unlimited.

EcoWall is an ideal choice when facing lightweight constraints. It complies with the requirements set by the External Hardboard in AS/NZS 1859.4: it is a strong and robust product, yet lightweight and the large size panels make installation quick and easy.

EcoWall durability makes it the best choice for:

- Wall and façade linings
- Exhibition buildings, sports facilities and entertainment centre's linings
- School halls
- Decorative linings in homes and commercial premises

Weatherex can be used internally and as an external wall cladding in bushfire attack levels up to and including BAL 19 construction.

**ECOWALL
SMOOTH SIZES**

3660 x 1220mm
2745 x 1220mm
2440 x 1220mm
1220 x 1220mm
1220 x 915mm

new sizes

Thickness: 9.5mm

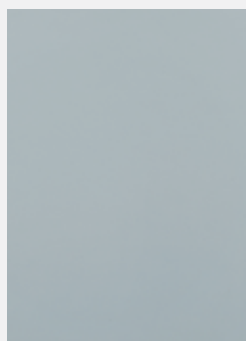
FREE online samples now available



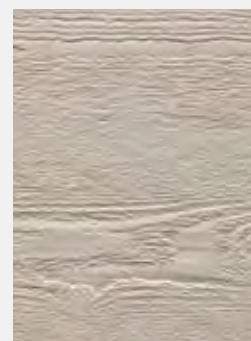
EcoWall Smooth



Download the installation manual



ECOWALL SMOOTH



ECOWALL WOODSMAN
(Available in 3660mm only)

* Refer to the Weatherex Manufacturer's Warranty Conditions

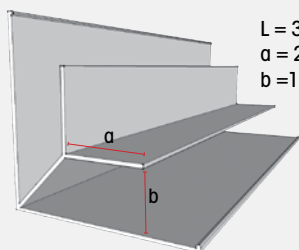
EcoWall Accessories



EcoWall Smooth

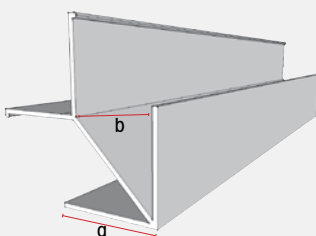
Trimtec accessories *made from anodised aluminium

SMALL INTERNAL LF ALUMINIUM CORNER



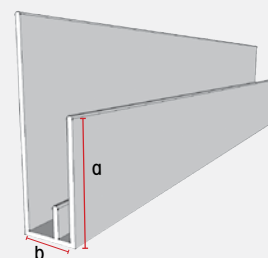
L = 3660mm
a = 27mm
b = 11mm

SMALL EXTERNAL LF ALUMINIUM CORNER



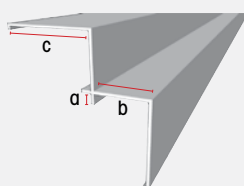
L = 3660mm
a = 27mm
b = 11mm

SMALL END STOP/ WINDOW SURROUND



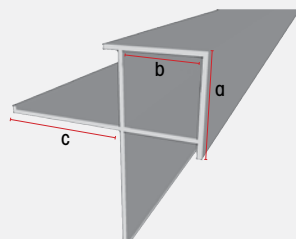
L = 3660mm
a = 27mm
b = 11mm

SMALL INTERNAL ALUMINIUM CORNER



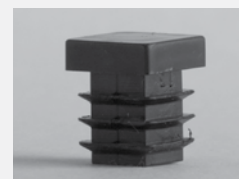
L = 3660mm
a = 4mm
b = 11mm
c = 35mm

SMALL EXTERNAL ALUMINIUM CORNER

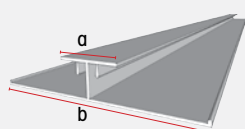


L = 3660mm
a = 17mm
b = 11mm
c = 35mm

SMALL CORNER PLUG

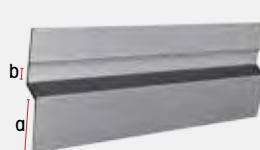


LONG VERTICAL ALUMINIUM JOINER



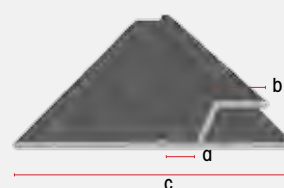
L = 3660mm
a = 20mm
b = 70mm

ALUMINIUM Z FLASHING



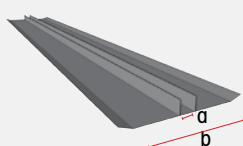
L = 3660mm
a = 27mm
b = 11mm

SMALL ALUMINIUM Z FLASHING



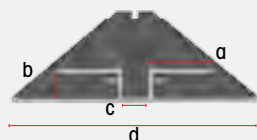
L = 3670mm
a = 10mm
b = 10mm
c = 73mm

ALUMINIUM DEEP CHANNEL JOINER

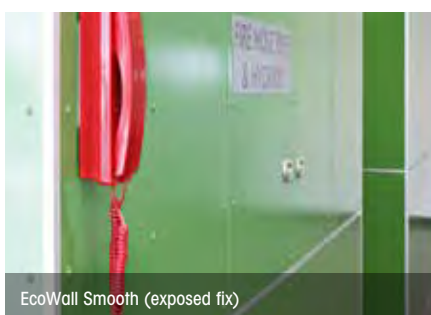


L = 3660mm
a = 10mm
b = 70mm

DEEP CHANNEL JOINER LF



L = 3660mm
a = 27mm
b = 11mm
c = 10mm
d = 100mm



EcoWall Smooth (exposed fix)

Cavity wall system (optional)

SMALL CAVITY CLOSER

L = 1830mm
a = 10mm



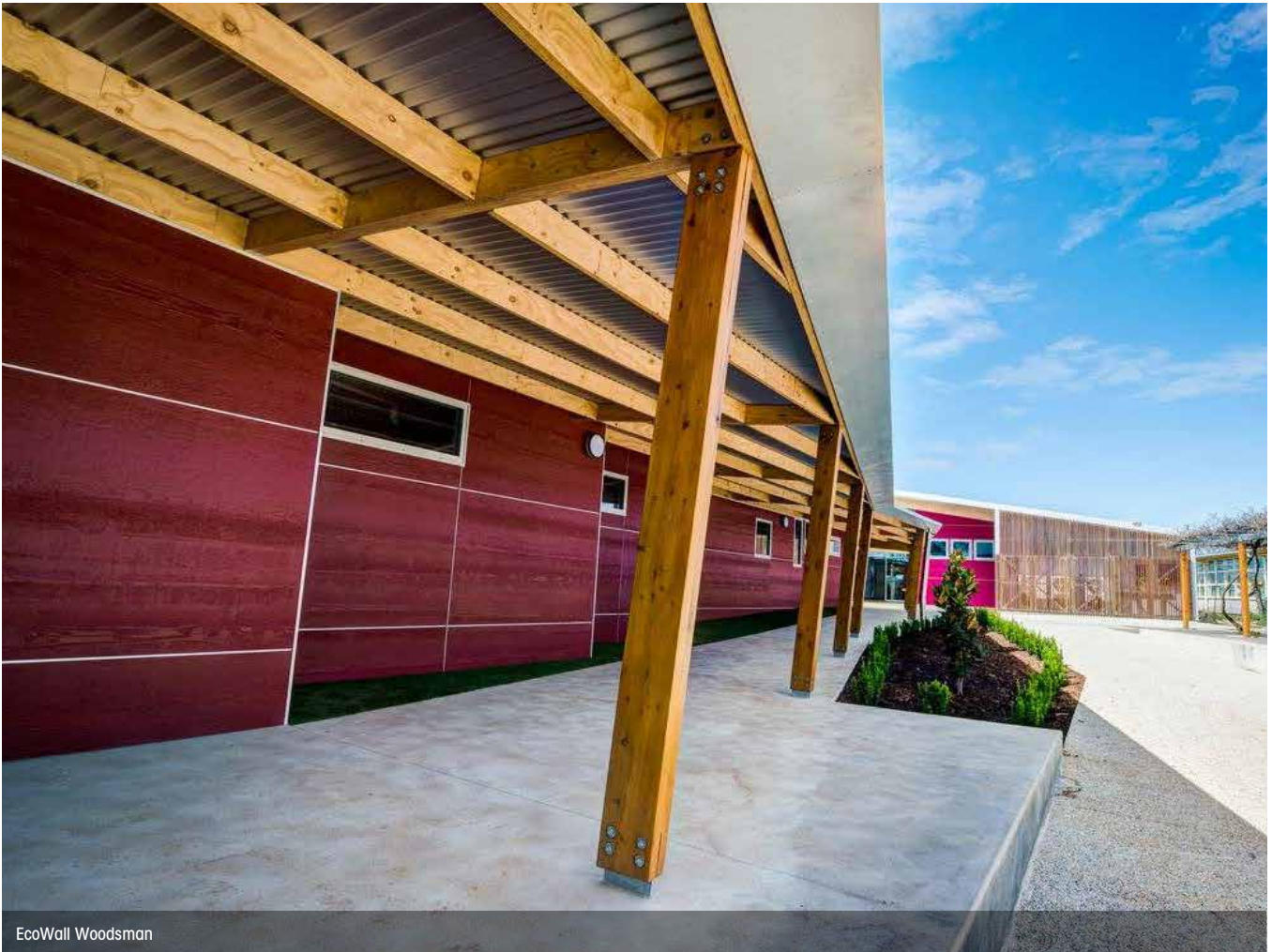
CAVITY BATTENS

1220mm x 45mm
For all cavity constructions





EcoWall Smooth



EcoWall Woodsman



EcoWall Smooth



EcoWall Smooth





Rubix Panel Smooth, and Weathergroove 150 Ruff-Sawn



Rubix Panel Smooth

Rubix Panels

Rubix Panel is a self-locking Architectural Panel available in square or rectangular panels designed to be joined on or off-stud.

Rubix Panel provides unprecedented flexibility and ease, since no joining accessories are needed for installation. This helps to eliminate the puzzle that comes with other matrix style products.

Rubix can be used for both internal and external applications. If using outside it should be installed with a cavity system.

Weathertex can be used as an external wall cladding in bushfire attack levels up to and including BAL 19 construction.



Rubix Panel Smooth

FREE online samples now available



Rubix Panel Smooth



Download the installation manual



RUBIX PANEL
SMOOTH

(IMAGE SHOWS 4 PANELS INTERLOCKING TOGETHER)

RUBIX PANEL SIZES

1200 x 1200mm
1200 x 900mm

Thickness: 9.5mm

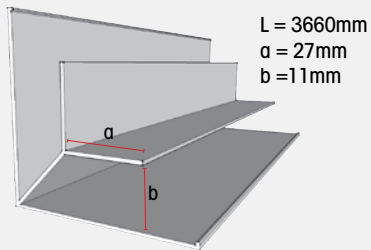
* Refer to the Weathertex Manufacturer's Warranty Conditions

Rubix Accessories

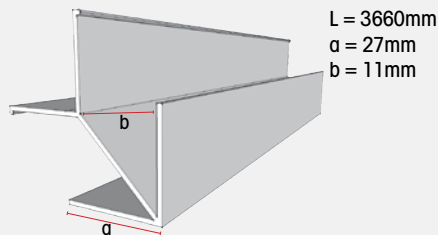


Trimtec accessories *made from anodised aluminium

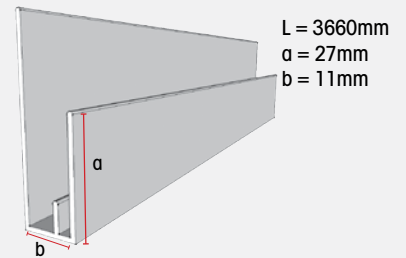
SMALL INTERNAL LF ALUMINIUM CORNER



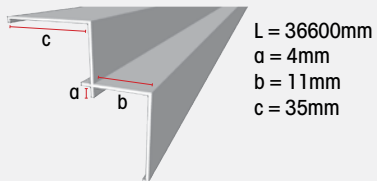
SMALL EXTERNAL LF ALUMINIUM CORNER



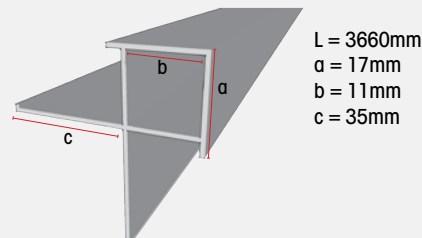
SMALL END STOP/ WINDOW SURROUND



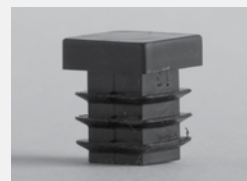
SMALL INTERNAL ALUMINIUM CORNER



SMALL EXTERNAL ALUMINIUM CORNER



SMALL CORNER PLUG



Cavity wall system

SMALL CAVITY CLOSER

L = 1830mm
a = 10mm



CAVITY BATTENS



1220mm x 45mm
For all cavity constructions



Rubix Smooth



Rubix Smooth



Rubix Smooth and Primelok Shadowood Smooth



Rubix Smooth and Weathergroove 150 Ruff-Sawn



Rubix Smooth



Rubix Smooth



Rubix Smooth

VOTED No.1
**MOST TRUSTED
 BRAND**



EcoWall Smooth, Weathergroove 150 Natural, Primelok Smooth



weathertex.com.au Ph: 1800 040 080 Fax: 1800 647 926



Last updated September 2017
 Disclaimer: Product Portfolio to be used only as a guide.
 Always refer to the installation manual for correct installation & warranty.

* Refer to the Weathertex Manufacturer's Warranty Conditions

Weathertex® is made in Australia by Weathertex Pty Ltd ABN 67 084 713 986
 PO Box 21, Raymond Terrace NSW 2324